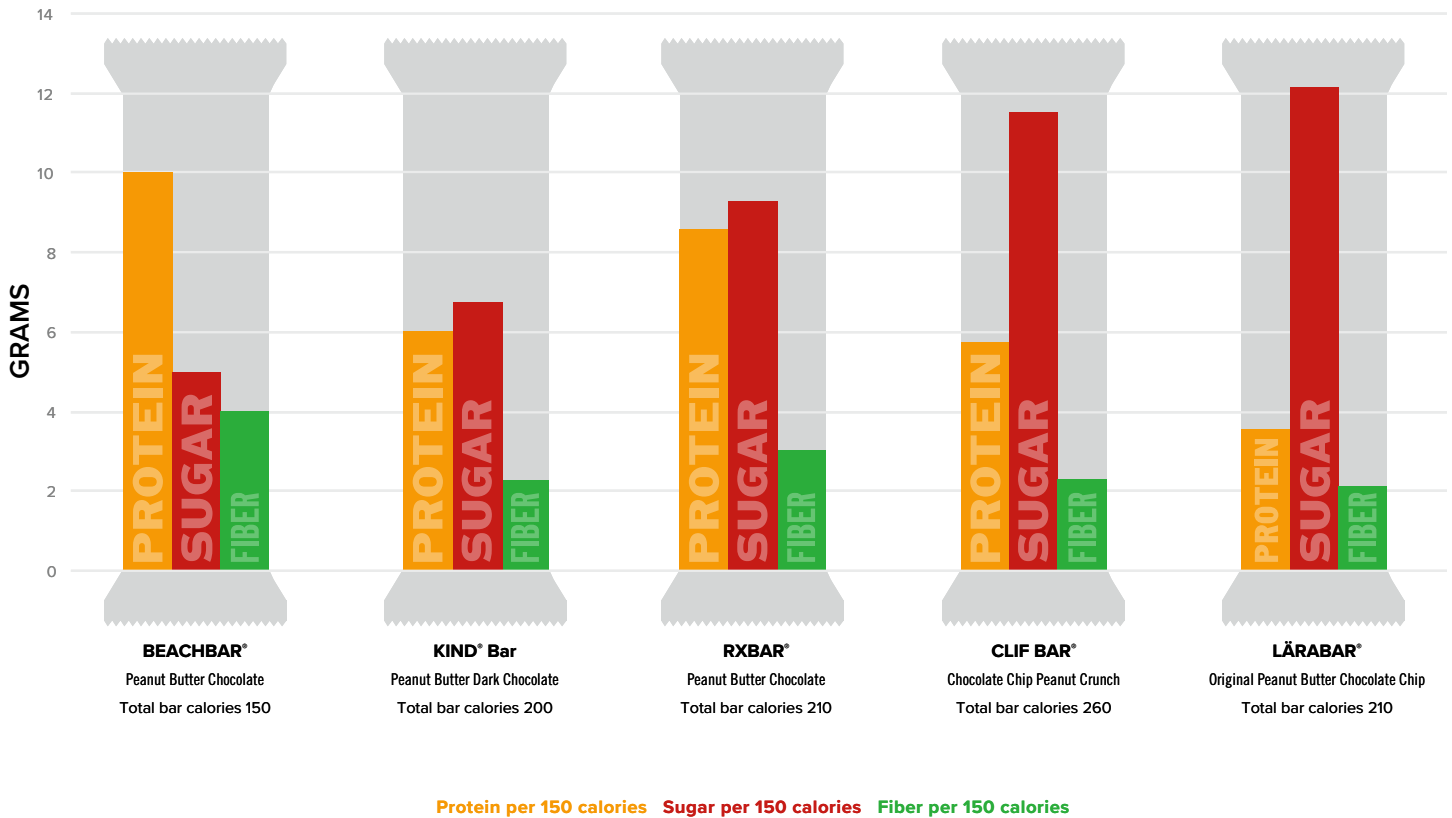


BEACHBAR[®]

HOW WE STACK UP TO THE COMPETITION

CALORIE FOR CALORIE, BEACHBAR HAS A HIGHER PROPORTION OF SATISFYING PROTEIN AND FIBER PER CALORIE AND A LOWER PROPORTION OF SUGAR PER CALORIE THAN FOUR OTHER LEADING SNACK BARS.*

The chart below reflects the grams of protein, sugar, and fiber per 150 calories.



*Competitive bar nutrition information collected January 2018 for the following brands and flavors:

KIND www.kindsnacks.com/products/kind-nut-bars/peanut-butter-dark-chocolate-bar-bar

CLIF shop.clifbar.com/CLIF-Bar-Chocolate-Chip-Peanut-Crunch/p/CLIF-101303&c=ClifBar@ClifBar@Bars

RXBAR www.rxbar.com/shop/peanut-butter-chocolate-whole-protein-bar-box-of-12-bar.html

LARABAR www.larabar.com/our-products/larabar/peanut-butter-chocolate-chip

KIND is a trademark of KIND LLC. XBAR is a trademark of Chicago Bar Company LLC. CLIF BAR is a trademark of Clif Bar & Company. LÄRABAR is a trademark of General Mills Specialty Products, LLC.